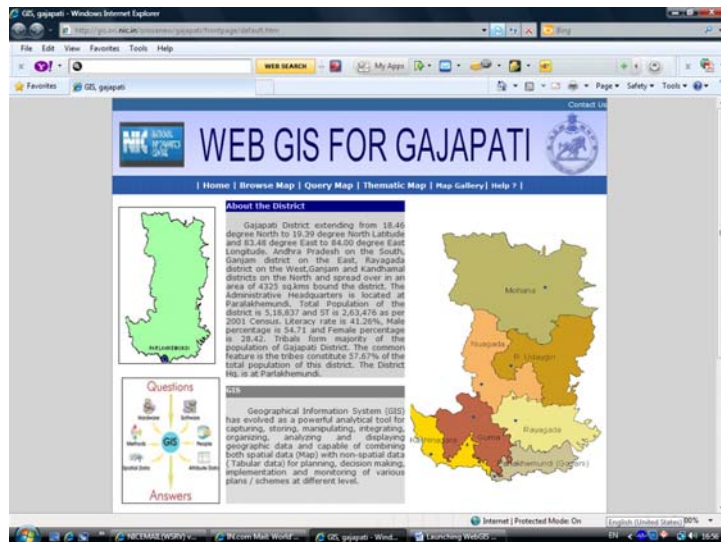


LAUNCHING OF WEB BASED GIS PORTAL AT GAJAPATI

GAJAPATI district is one of the backward districts of Odisha. The major part of the district belongs to hilly terrain, lush green forests and undulated topography, which is inhabited by the tribal communities. Forest covers (2,301.98 Sq. km) approx. 60% area of the total area of the district (3,850.00 Sq. km.). It has 1528 villages having 7 Blocks and 129 GPs.

It is the 2nd **LWE** (Left Wing Extremism) affected district to initiate development of a complete GIS application (Desktop as well as Web based GIS) to support the district administration at



different levels in monitoring, planning, decision making and implementing the Geographic data at various sectoral activities. Using this tool, different activities such as capturing, storing, manipulating, integrating, organizing, analyzing and displaying of geographic data is possible. This application is capable of combining both spatial data (Map) with non-spatial data (Tabular data). GIS Division, NIC Bhubaneswar with the support of NIC District unit, Gajapati, developed this application.

The web based GIS software had been inaugurated by the then Collector, Shri P C Das on 20/04/2011 at the state of art based newly constructed NIC District unit, Gajapati.

The URL of the web based GIS portal of Gajapati district is:

<http://gis.ori.nic.in/orissanew/gajapati/frontpage/default.htm>

In order to present the project development from its inception till the inauguration of the project on 20/04/2011 and to familiarize the features and utility of GIS to the officials of the districts, 3 workshops on “Development of Web-based GIS for Gajapati district” were organized at DRDA conference hall and at NIC district unit for hands on session. The workshops were chaired by the then Collector Shri P C Das. PD DRDA & other district level officials were also present during the workshops. The Project development was demonstrated by Dr. (Mrs) M. Routray, Scientist-E and Head GIS Div., NIC Bhubaneswar & Shri B K Samal, Scientist-D, NIC Bhubaneswar.





NIC District Unit, Gajapati.

Shri B K Samal Scientist-D, NIC Bhubaneswar and DIO, & DIA NIC Gajapati unit have conducted the training to the above staff. The training was imparted on both web based GIS and on Desktop GIS application using GIS software. Participants were trained on the basic aspects of GIS includes

- Desktop based GIS software installation & Configuration
- External data integration
- Creation of new shape files
- Database modification / updation
- Thematic Map generation
- Query based Map generation
- Report generation, Labeling & Printing

The entire programme was organized and coordinated by Mr. T. Balakrishna Murty, DIO-cum-Scientist-C, and Mr. R R Majhi, Scientific Officer/Engr "SB"-cum-DIA. The other officials had extended their support to make the program success

The effort put in by NIC has been highly appreciated by the then Collector and other district officials of Gajapati district. Shri S K Panda, SIO and Sr. Technical Director, NIC, Orissa State Unit, Bhubaneswar has also conveyed his best wishes to the entire team.

During the Workshops, the presentation started with the extensive and elaborate discussion on the basic concepts and advantages of using GIS & Web-GIS in monitoring and implementing of various plans & schemes operated at different levels in this LWE district.

The last workshop was followed by two days training program on GIS for the computer programmers of all blocks and computer professionals/operators of district level offices during 29-30th April 2011 at newly inaugurated

